

Children's Health Ireland

Eilísh Hardiman, Chief Executive



Sláinte Leanaí Éireann



Children's Health Ireland

 @nch_info | #ourchildrenshospital

CHI | Crumlin | Temple Street | Tallaght | Connolly

Children's Health Ireland

- 1 January 2019 - the three Dublin children's hospitals and the Children's Hospital Group transitioned from four separate, independently governed entities into one new single organisation, Children's Health Ireland (CHI) to govern and operate local paediatric services for the Greater Dublin Area and all national paediatric specialist services, some of which are on an all-island basis. Our hospital locations are at Crumlin, Temple Street, Tallaght and since July 2019 at Connolly Hospital, Blanchardstown.
- One quarter of our population are children under 18 years of age. The majority are healthy, but 1/4 of three year olds are obese, 16% of our children have a chronic disease, such as, diabetes, allergies and asthma. 2% are acutely ill or have complex care needs
- CHI currently has a staff of 3,600 delivering care annually to 334,500 children, young people and their families through 39 clinical specialities and 442 in-patient & day care beds
- 2019 activity: In-patients 24,500; Day cases 33,500; Outpatients 147,500; ED 129,000

Sláinte Leanaí Éireann



Children's Health Ireland

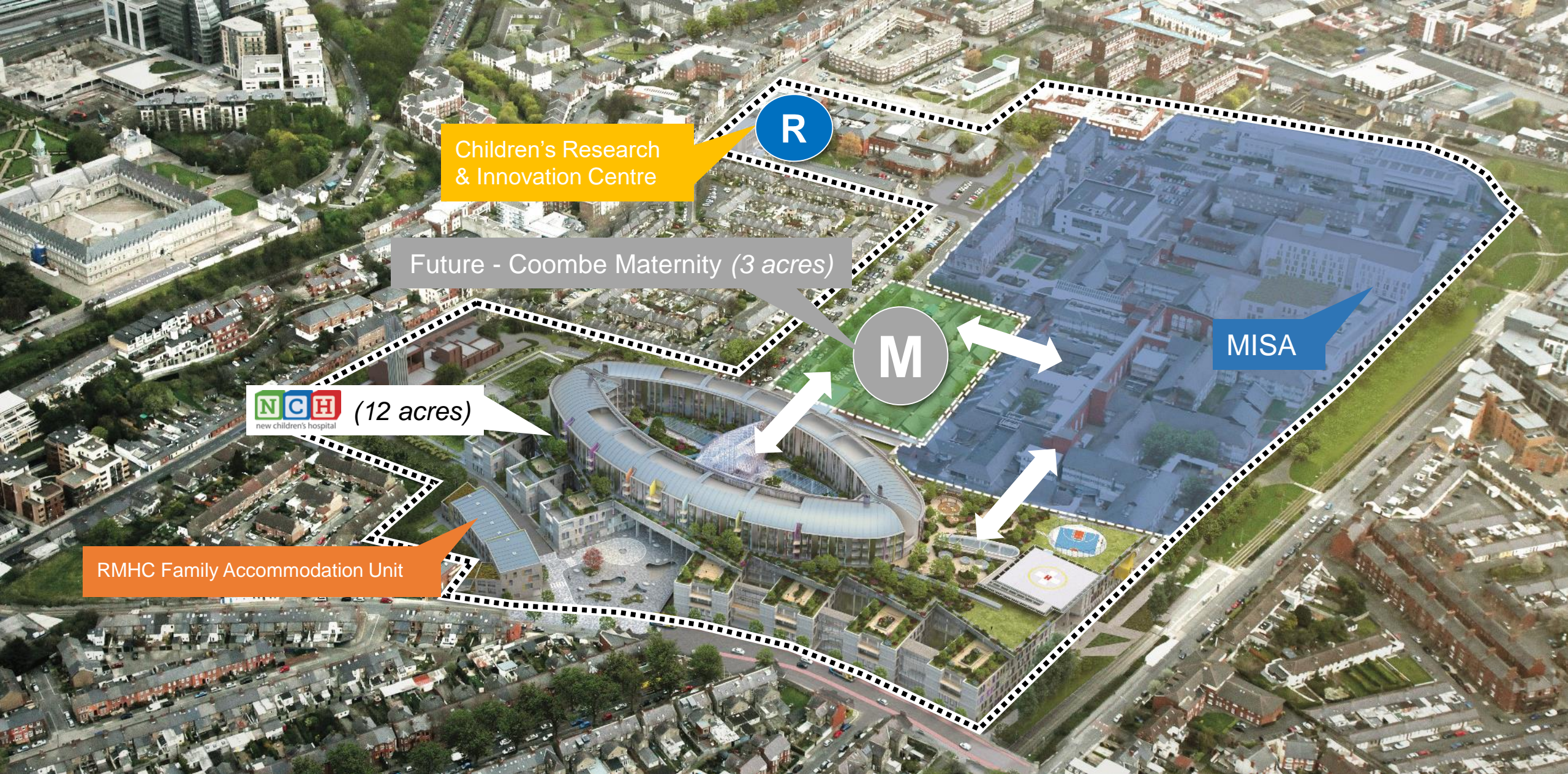


@nch_info | #ourchildrenshospital



The new children's hospital
Construction Progress Update to Dublin City Council South
Central Area Committee

Phelim Devine – Project Director



Children's Research & Innovation Centre

R

Future - Coombe Maternity (3 acres)

M

MISA

NCH (12 acres)
new children's hospital

RMHC Family Accommodation Unit

St. James's Hospital Campus (50 acres)

A world-class children's hospital project



6150 rooms in total

Located on **12** acres



the size of **6** soccer pitches



The size of Dundrum Town Centre, with an internal street the length of Grafton Street



380 individual, en-suite inpatient bedrooms – each with a bed for parent

93 Day Beds

53 53-unit family accommodation facility

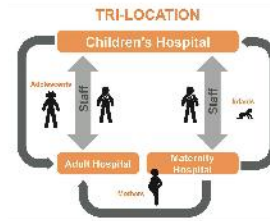


P 1,000

parking spaces

675 dedicated for families

31 emergency spaces, at ground level



Tri-location with Adult and Maternity hospitals on a shared campus



A Children's Research and Innovation Centre

1st public digital hospital



2 new paediatric outpatient & urgent care centres at Tallaght Hospital and Connolly Hospital



22 Operating Theatres & Procedure Rooms (nch only)



4 acres of outdoor space with **14** gardens and courtyards

Find out more



www.newchildrenshospital.ie

New Children's Hospital Aerial View of the 12 acre site



New Children's Hospital Aerial View of the 12 acre site



New Children's Hospital Aerial View of the 12 acre site

18-11-2019 Mon 16:00:48



Therapies

Haem/Onc Ward

Gardens

Theatres

Critical Care

Radiology

CDU

Therapies

Gardens

Surgical Ward

Cardiology

Concourse

Outpatients

Plantroom

Outpatients Fingers Scaffolded in advance of Cladding



Haem/Onc & Garden

Workspace & Garden

Surgical Ward

Cardiology Outpatient

Garden

Therapy Garden

Wards

Wards

View from South along Concourse

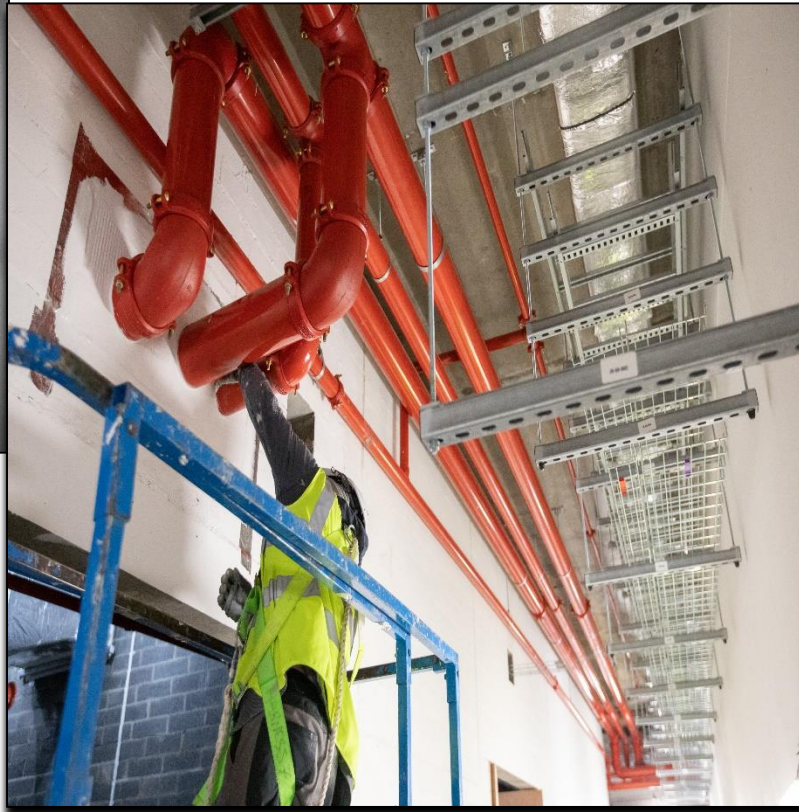


Mechanical & Electrical Services installation



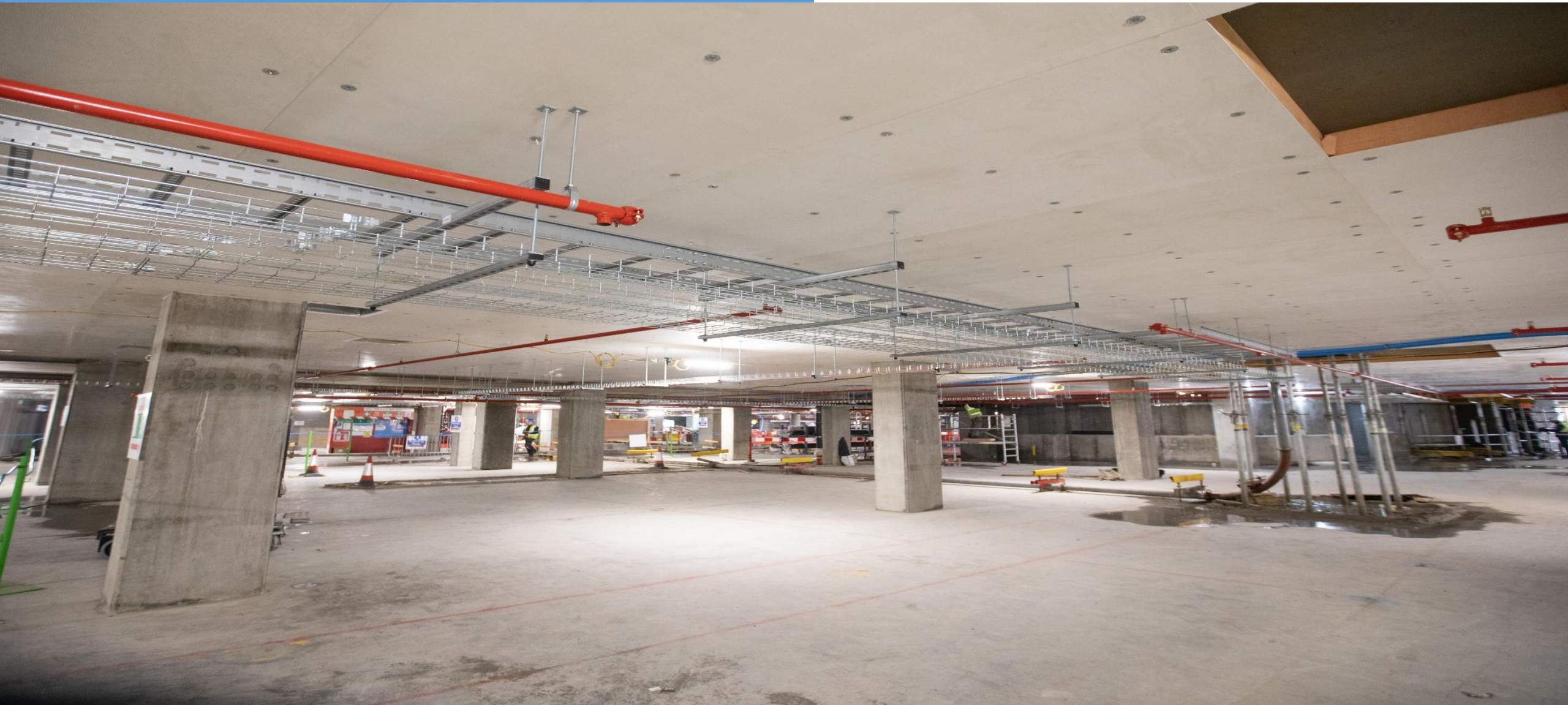
Steam Room Services

Fire Protection



Air Cooling Handling Units

Basement Carpark Level B1



Redevelopment of the Linear Park

In 2019 DCC Parks Landscape Services published a draft masterplan for the Linear Park (the area along the red luas line from Suir Road to Rialto Bridge and Rialto Bridge to Brandon Terrace just east of the Fatima Luas stop).

The Council hosted two public workshops in order to offer the local community and active stakeholders an opportunity to provide input on the draft masterplan.



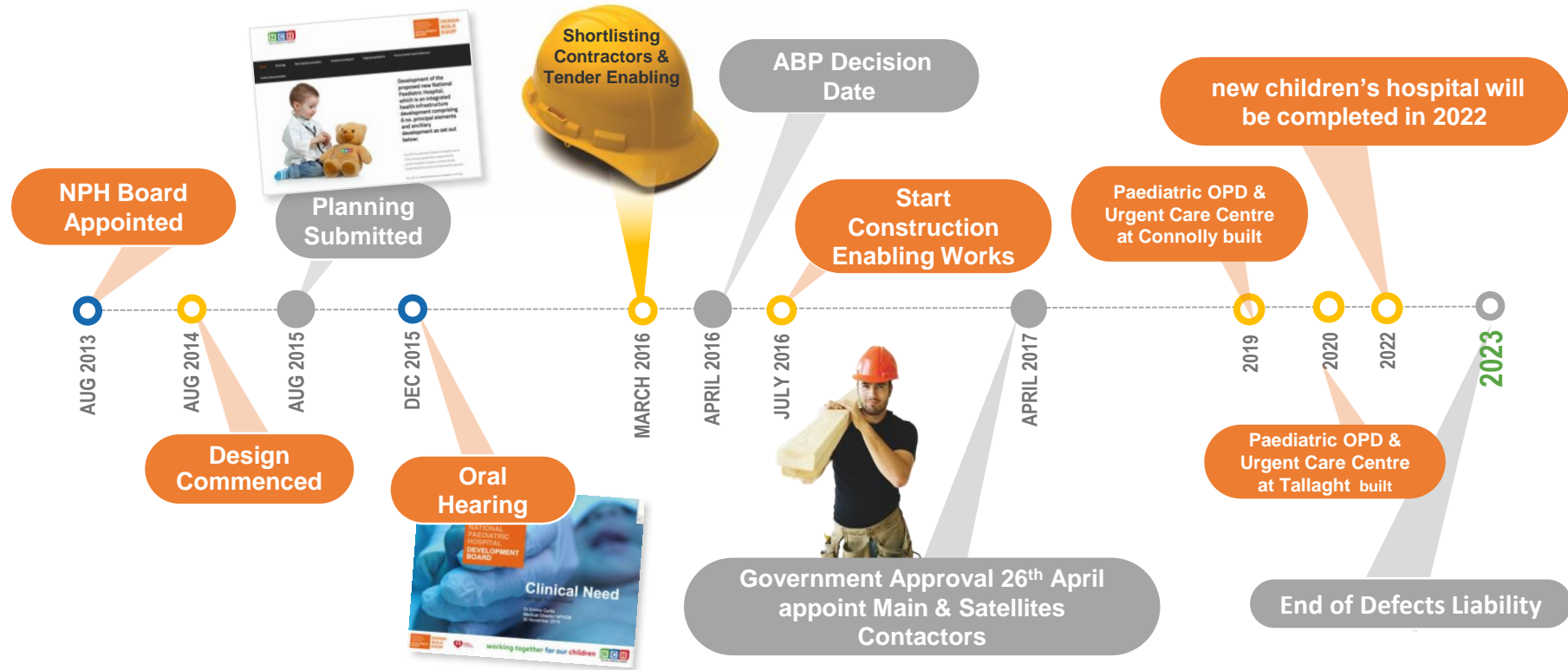
External Images



Internal Images



NCH Overall Ten - Year Programme



Did you know the new children's hospital has one of the most pioneering community benefit programmes in the country?

FOUR PILLARS

OUR MEMBERS

- ST. TERESA'S GARDENS REGENERATION BOARD
- DUBLIN CITY COUNCIL**
- DOLPHIN HOUSE & PARK REGENERATION BOARD
- NATIONAL PAEDIATRIC HOSPITAL DEVELOPMENT BOARD**
- INCHICORE REGENERATION CONSULTATION FORUM
- DEPARTMENT OF EMPLOYMENT AFFAIRS AND SOCIAL PROTECTION**
- HSE
- KILMAINHAM INCHICORE NETWORK**
- CITY OF DUBLIN EDUCATION & TRAINING BOARD
- FATIMA GROUPS UNITED**
- DUBLIN CITY COMMUNITY CO-OP
- CHILDREN'S HEALTH IRELAND**
- DUBLIN SOUTH CITY PARTNERSHIP
- St. JAMES'S HOSPITAL**
- INDEPENDENT CHAIR, GORDON JEYES

EMPLOYMENT




1,829.5

Weeks of "new entrant" employment


2,431.5

Weeks of employment provided by local workers


10

Apprenticeships created

ECONOMY




2

Meet the Buyer events


€2.5M

Spent by BAM on local contracts and suppliers


3

Contracts for social enterprises

EDUCATION




1,000

Young people involved in events and programmes


2

Healthcare Science in a Box programmes


2

Construction Career Days attended by over 500 secondary students

COMMUNITY HEALTH & WELLBEING




3

Youth groups working on 1 street art project


1

Platelet Donation Drive

COMMUNITY BENEFIT PROGRAMME FOR THE NEW CHILDREN'S HOSPITAL

ACHIEVED TO DATE...